

The SCP is currently, as of 07/04/2028, making repairs as it recovers from trying to "drum" a bass drum, not too dissimilar to the ones in band marches. It was struck once before it violently exploded and caused damage to the SCP by upwards of 15%, not including 33% damage to the organ that the SCP is attached to. The drum was unsalvageable.

2021-07-16



What was significant on this date? Was this when "Symphony of the Dreaded" occurred? I thought it was 02/25/2023. More research is needed to understand what this SCP is trying to convey... 15-19-17... What would these numbers mean? I'll leave that for Research Scientist [REDACTED] as he is more trained in this field.
-Res Asst Logan Bridges



It has been trying to trip us up in deciphering it's "language" with fake notes.
-RS [REDACTED]

Res Asst Mason just self-terminated after being tasked with the numbers 15-19-17, as well as looking into 07/16/2021.



What is this thing? Dr. Mu

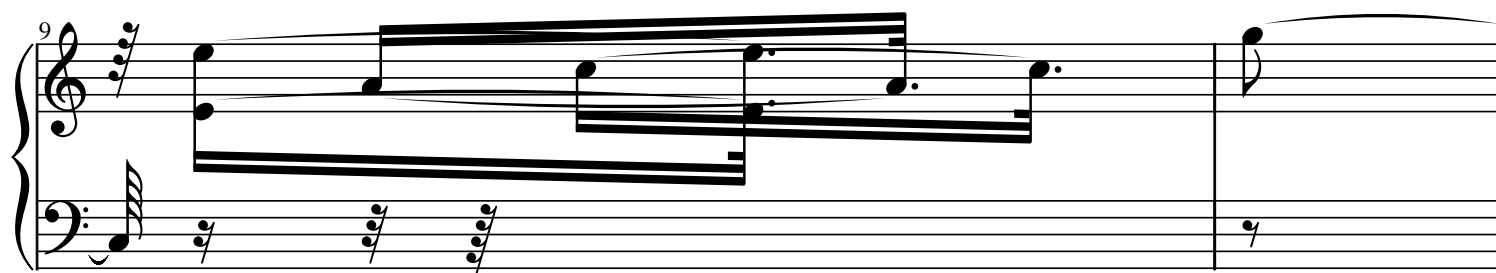
A.I.-Mu51-C is having issues determining this piece, as if the SCP is implementing some sort of deterrent. Request for more funds have been denied.
-Dr. Mu

Until further notice, ALL investigations into the history of this SCP is banned.
-05-1, -2, -3, & -11

SCP-XXXX has grown to being over 7 stories high.



05-01 and 05-11 requested my presence, apparently Res Asst Logan Bridges and RS [REDACTED] haven't been getting along as work seems to be "piling" up. Request for an upgrade to A.I.-Mu51-C has been granted, I hope they are mannered, unlike that Rosen character.
-L



It seems that a personality of the SCP is able to implement cognitohazards into the compositions, as research into RS [REDACTED]'s and Res Asst Logan's, as well as Res Asst Mason's, personalities have been altered, along with several anomalous events taking place. I am unsure if this is the SCP's doing OR if there is another anomaly. Contact with the Overseer has allowed insight into each of the affected individuals' lives. Mason had a masters of historiography, and delving in Musical Theory. RS [REDACTED] with 3 masters degrees, and Logan with no masters. Logan seems to be only a high school graduate. RS [REDACTED]

Alto Clef's expertize requested.

SCP-713 requested DENIED

Dr. Bright's requested DENIED

Dr. Kondraki DENIED

SCP-079 requested DENIED

SCP-732 requested DENIED

SCP-101-FR requested DENIED

SCP-5094 requested DENIED

SCP-682 requested DENIED

SCP-096 requested DENIED

Dr. Rights requested DENIED
Rosen DENIED. DENIED HARD!

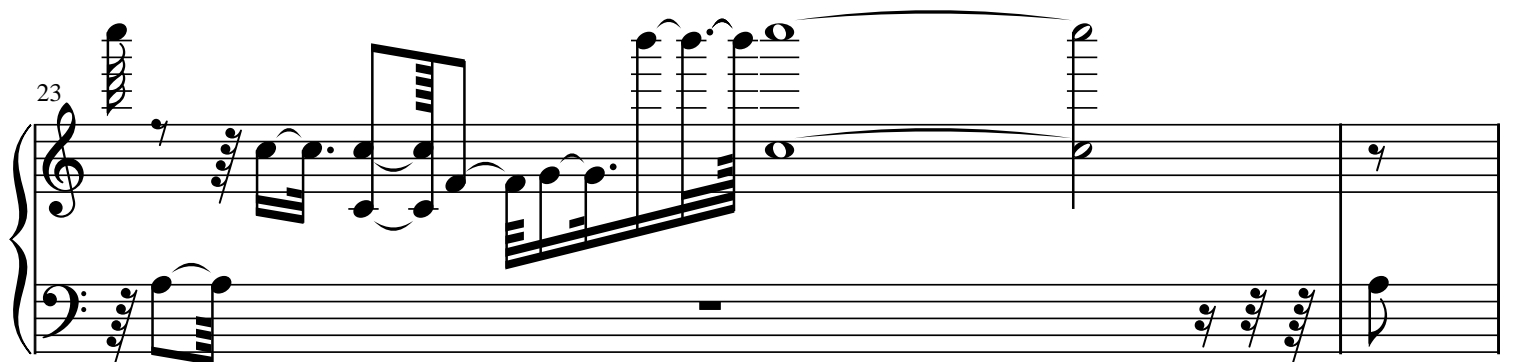
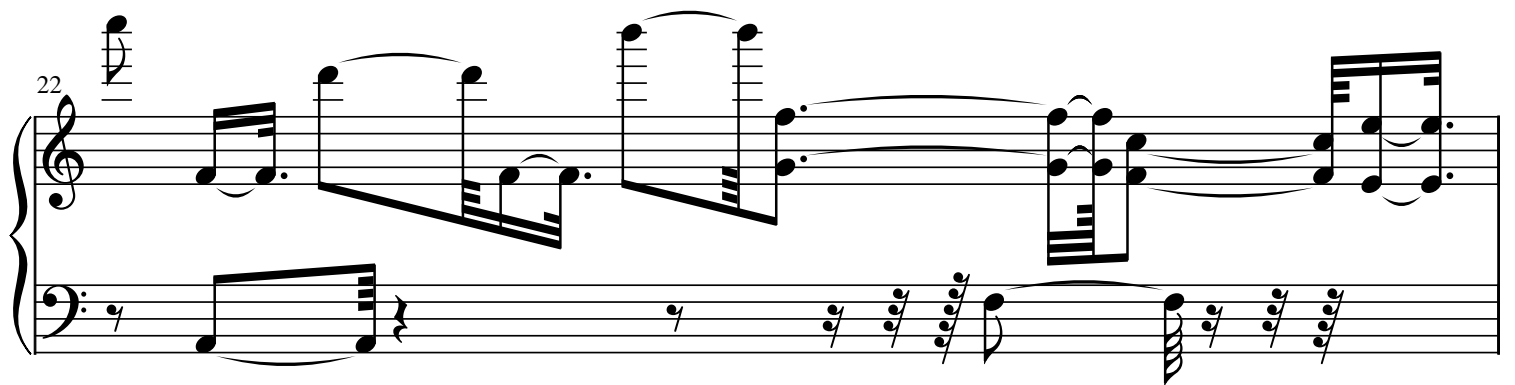
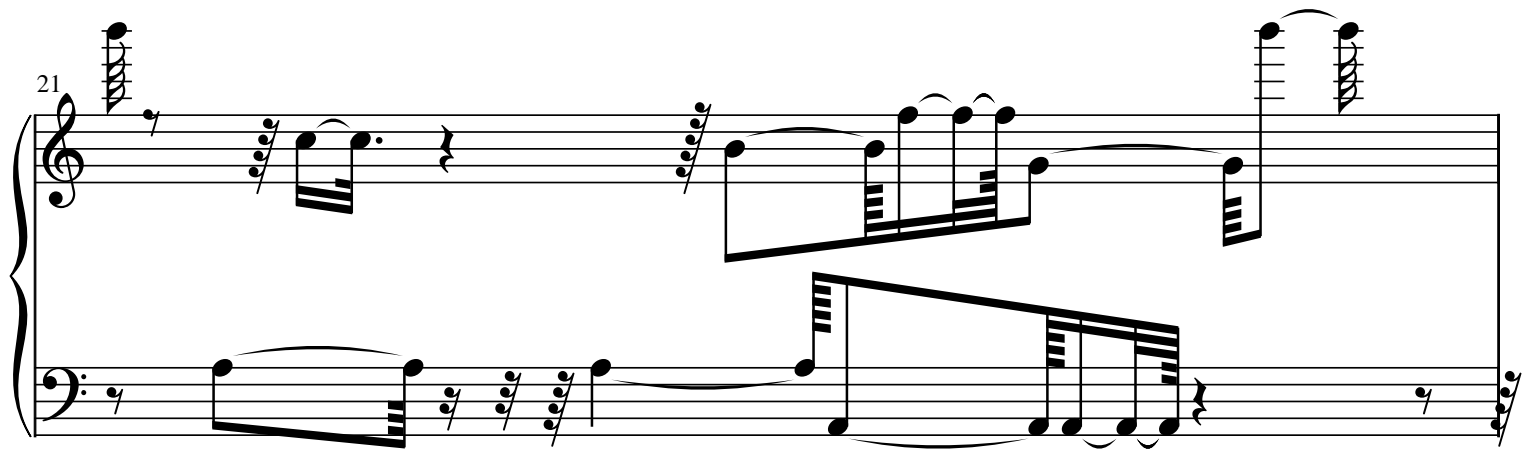
Why does this AI hate me?!

A.I.-Mu51-C:
/requests_block/
/search_4_dikhed/
/scanning_
/scan_complete/
/no_dikhed/
/shame/
/report_sent/

I knew someone altered A.I.-Mu51-C, but this has been going on long enough. Dr. Mu, RS [REDACTED], and Res Asst Logan are being summoned. It is time we stop this before something bad happens. -L

Noone did, though...
WUT?!

Mason O'Donovan. Age: 34 Height: 5'7" Time of death: 01/01/2031 Reasoning of death: bullet wound to the chest, ~~caused by the~~ ~~magnum~~ ~~for~~ ~~amen~~.
Reasoning of death: mind control via encoded message of SCP-XXXX's music sheet #15-19-17



On September, 12th, 2130, 09:00. Mason's texts has been seen all over SCP-XXXX's musical sheets. How we went on for 120 years and no one found this out is beyond me. Currently, Mason has not made contact with Foundation Staff for over 26 years. Current means of tracking his movements are also unobtainable due to his inactivity. Current analysis of these musical sheets has lead researchers to developing more SCP-XXXX instances and more sheet music, along with technologies that allows SCP-XXXX to affect them in ways that current technology cannot. SCP-XXXX has made on 57 escape attempts, all are believed to due to Mason's interaction with SCP-XXXX, resulting in it giving chase to Mason and finally "integrating" him into SCP-XXXX. I believe that due to the info/cognito-hazardous material in these sheet musics, the best course of action is storage. D-Class testing will commence when approval is acquired. If anyone is reading this, know that Mason is in great care and that I will integrate you into my body! You cannot escape the Maestro! Bow to me Mason! Know that this will be your doom! This is your hell! You will allow me this pleasure of mine and you will die. Die and never be loved by anyone else ever again! FEED ME!

25

Measures 25-26 of a piano score. Measure 25 features a treble staff with a quarter rest followed by an eighth-note triplet, and a bass staff with a quarter note, a quarter rest, and a half-note triplet. Measure 26 continues with a treble staff containing a half-note triplet and a half note, and a bass staff with a half-note triplet and a half note. Both staves end with a double bar line.

26

Measures 27-28 of a piano score. Measure 27 has a treble staff with a half-note triplet and a half note, and a bass staff with a half-note triplet and a half note. Measure 28 features a treble staff with a half-note triplet and a half note, and a bass staff with a half-note triplet and a half note. Both staves end with a double bar line.

27

Measures 29-30 of a piano score. Measure 29 has a treble staff with a half-note triplet and a half note, and a bass staff with a half-note triplet and a half note. Measure 30 features a treble staff with a half-note triplet and a half note, and a bass staff with a half-note triplet and a half note. Both staves end with a double bar line.

29

Measures 31-32 of a piano score. Measure 31 has a treble staff with a half-note triplet and a half note, and a bass staff with a half-note triplet and a half note. Measure 32 features a treble staff with a half-note triplet and a half note, and a bass staff with a half-note triplet and a half note. Both staves end with a double bar line.

31

Handwritten musical notation for measures 31 and 32. Measure 31 features a treble staff with a half rest, a quarter rest, and a half note G4, and a bass staff with a half note G2, a quarter note F2, and a half note E2. Measure 32 features a treble staff with a half note G4, a quarter note F4, and a half note E4, and a bass staff with a half note G2, a quarter note F2, and a half note E2.

32

Handwritten musical notation for measure 32. The treble staff contains a half note G4, a quarter note F4, and a half note E4. The bass staff contains a half note G2, a quarter note F2, and a half note E2.

33

Handwritten musical notation for measures 33 and 34. Measure 33 features a treble staff with a half note G4, a quarter note F4, and a half note E4, and a bass staff with a half note G2, a quarter note F2, and a half note E2. Measure 34 features a treble staff with a half note G4, a quarter note F4, and a half note E4, and a bass staff with a half note G2, a quarter note F2, and a half note E2.

35

Handwritten musical notation for measures 35 and 36. Measure 35 features a treble staff with a half note G4, a quarter note F4, and a half note E4, and a bass staff with a half note G2, a quarter note F2, and a half note E2. Measure 36 features a treble staff with a half note G4, a quarter note F4, and a half note E4, and a bass staff with a half note G2, a quarter note F2, and a half note E2.

37

Handwritten musical notation for measures 37 and 38. Measure 37 features a treble staff with a half note G4, a quarter note F4, and a half note E4, and a bass staff with a half note G2, a quarter note F2, and a half note E2. Measure 38 features a treble staff with a half note G4, a quarter note F4, and a half note E4, and a bass staff with a half note G2, a quarter note F2, and a half note E2.

39

This system contains measures 39 and 40. Measure 39 features a treble staff with a series of eighth-note chords and a bass staff with a similar rhythmic pattern. Measure 40 continues the sequence with more complex chordal structures and some ledger lines in the treble staff.

41

This system contains measures 41 and 42. Measure 41 shows a continuation of the eighth-note patterns in both staves. Measure 42 introduces some ledger lines in the treble staff and more complex chordal structures in the bass staff.

43

This system contains measures 43 and 44. Measure 43 features a treble staff with a series of eighth-note chords and a bass staff with a similar rhythmic pattern. Measure 44 continues the sequence with more complex chordal structures and some ledger lines in the treble staff.

44

This system contains measures 45 and 46. Measure 45 shows a continuation of the eighth-note patterns in both staves. Measure 46 introduces some ledger lines in the treble staff and more complex chordal structures in the bass staff.

46

Measures 46-47 of a piano score. Measure 46 features a treble staff with a half note G4, a quarter note A4, and a half note B4, all beamed together. The bass staff has a half note G3, a quarter note A3, and a half note B3, also beamed together. Measure 47 continues with similar notation, including a half note C5 and a quarter note D5 in the treble, and a half note C4 and a quarter note D4 in the bass.

47

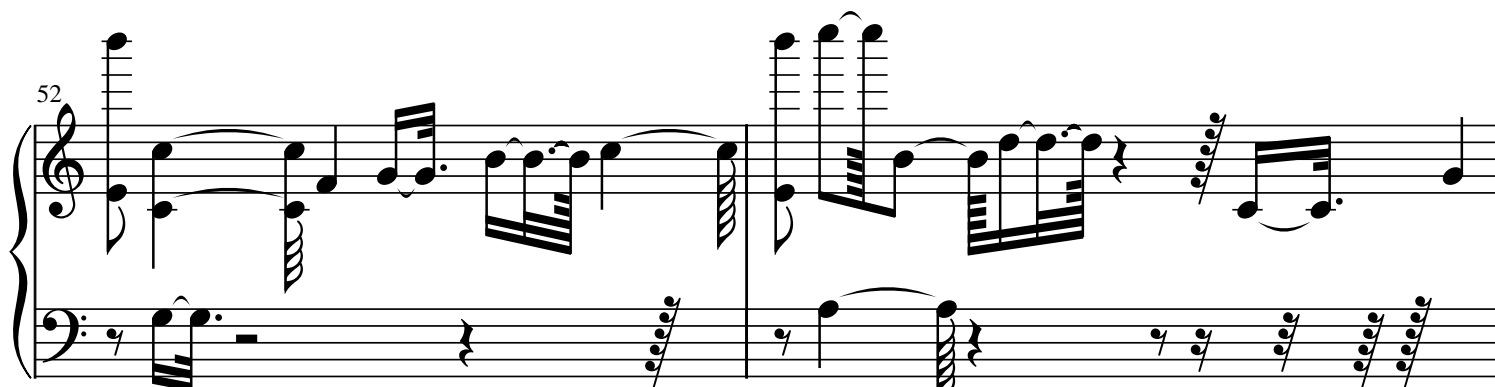
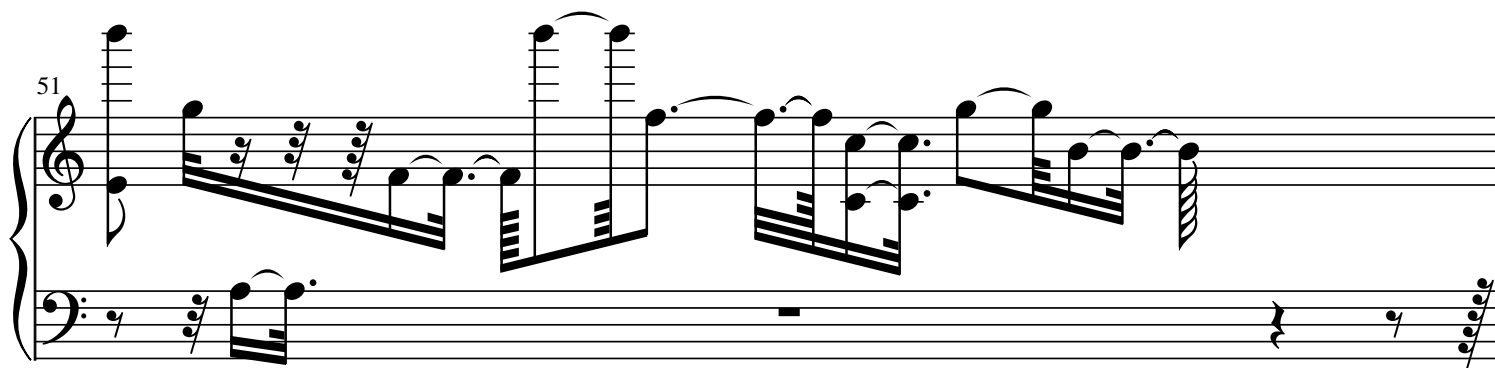
Measures 48-49 of a piano score. Measure 48 features a treble staff with a half note G4, a quarter note A4, and a half note B4, all beamed together. The bass staff has a half note G3, a quarter note A3, and a half note B3, also beamed together. Measure 49 continues with similar notation, including a half note C5 and a quarter note D5 in the treble, and a half note C4 and a quarter note D4 in the bass.

48

Measures 50-51 of a piano score. Measure 50 features a treble staff with a half note G4, a quarter note A4, and a half note B4, all beamed together. The bass staff has a half note G3, a quarter note A3, and a half note B3, also beamed together. Measure 51 continues with similar notation, including a half note C5 and a quarter note D5 in the treble, and a half note C4 and a quarter note D4 in the bass.

49

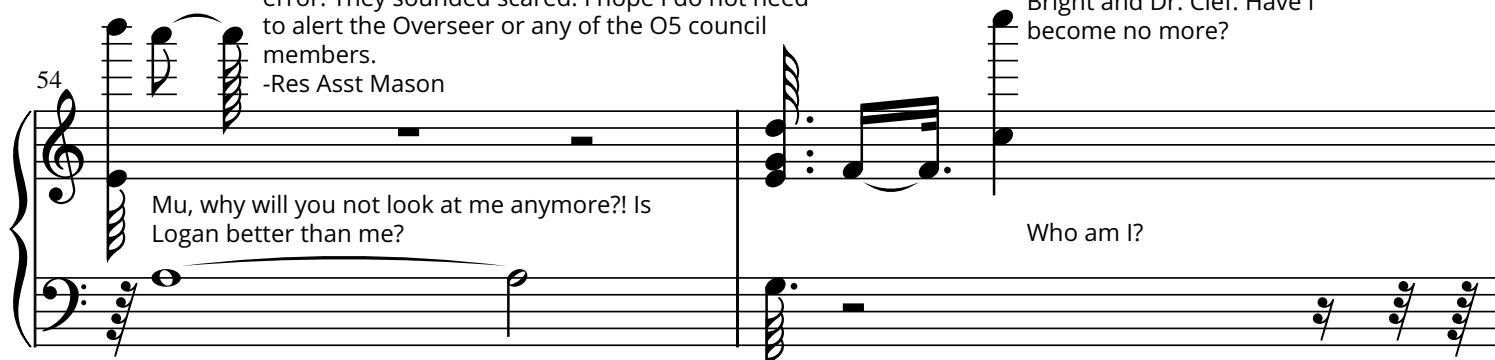
Measures 52-53 of a piano score. Measure 52 features a treble staff with a half note G4, a quarter note A4, and a half note B4, all beamed together. The bass staff has a half note G3, a quarter note A3, and a half note B3, also beamed together. Measure 53 continues with similar notation, including a half note C5 and a quarter note D5 in the treble, and a half note C4 and a quarter note D4 in the bass.



Someone is messing with these documents. I have let Logan, [REDACTED] and Mu known about this error. They sounded scared. I hope I do not need to alert the Overseer or any of the O5 council members.

-Res Asst Mason

Why won't anyone respond to me? I even contacted Dr. Bright and Dr. Clef. Have I become no more?

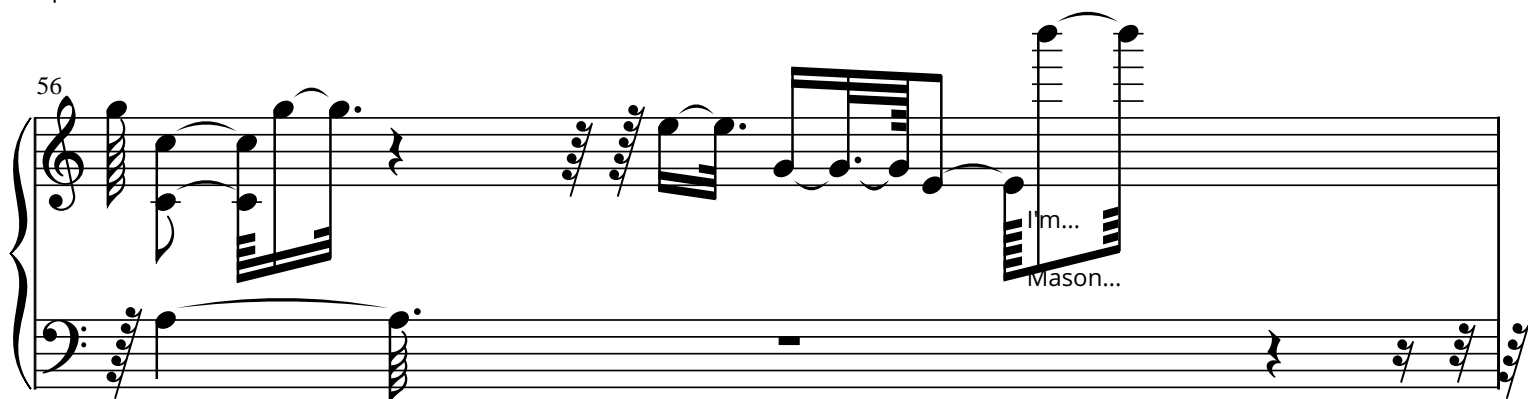


Mu, why will you not look at me anymore?! Is Logan better than me?

Who am I?

SCP-XXXX has developed a rusty cowbell. Dr. Mu has forbidden all personnel from touching it and has placed the SCP-XXXX instance in

I'm... Nosam...
No...



I'm...
Mason...

All the dates are wrong. The numbers! How could we have been so blind?! Dr. Mu tasked me with those numbers! But... I don't remember them. .. 16-18-18? 14-20-16? What were they?! Why do I not remember them!? Why has Dr. Mu not gotten back to me? Did I get terminated and not realize it?! I was so certain that I was doing fine. I followed all of the rules like don't touch the paino... Nor the xylabone... Or any of that SCP's instances. But, why am I seemingly nonexistent... As if... I never existed...? I... No... I must have! I'm going to go to the Overseer and slap him. He will know what has happened. He has to!

Combating the behavioral swings that [REDACTED] and Logan experienced has lead me to this composition. Currently not infohazardous, this simple sheet music has now been written on by at least 30 different persons. Including Mason seemingly. Dr. Mu has been let known of this information. Studying Mason's actions is now Priority 1.

-L

Why won't you kill me?! I'm right here! Take me! End my misery! Stop wasting my time and fucking do it! I will kill you if you do not! I have brains!
What you have?! An organ that you can't play!

57 AH! FUCK! Haha... Get back here! NO MASON! LEAVE ME ALONE! Try me! I'll make you eat those words!

This musical system contains measures 57 and 58. Measure 57 features a treble clef with a series of eighth and sixteenth notes, and a bass clef with a single eighth note. Measure 58 continues the melody in the treble clef with a more complex rhythmic pattern, while the bass clef has a few scattered notes.

Dr. Mu,
The O5 Council has determined that SCP-XXXX is now to be classified to KETER,
due to several anomalous abilities experienced as well as inconsistent
containment procedures. More staff is enroute. Don't fail us.
-O5 Council

Dr. Mu,
The O5 Council has accepted L's proposal.
SCP-XXXX's CTF & MTF are to be outfitted with some
"weaponry" made by SCP-XXXX. Due to recent events,
SCP-XXXX is not to be allowed to test any of the
instances.
-O5 Council

59 My mask keeps me safe... Its wires make me forget... SHUT UP

This musical system contains measures 59 and 60. Measure 59 has a treble clef with a melody of eighth notes and a bass clef with a few notes. Measure 60 continues the melody in the treble clef, with the bass clef having more notes.

Mason...
I have a need...
TO FEED!
TO HUNT!
TO KILL!
TO DIE!

I'm running out of places to hide...
WHY DOES HE WANT ME?!?!

60

This musical system contains measures 60 and 61. Measure 60 features a treble clef with a melody of eighth notes and a bass clef with a few notes. Measure 61 continues the melody in the treble clef, with the bass clef having more notes.

61 63

This musical system contains measures 61 and 63. Measure 61 has a treble clef with a melody of eighth notes and a bass clef with a few notes. Measure 63 continues the melody in the treble clef, with the bass clef having more notes.

Might as well live my life near that freaky SCP. Seems "he" can see me. I don't know how. Everytime I am near his area, he stops everything and looks in my general direction. No. He looks AT ME. He has to be seeing me. There is no way that I am dead. These reports must be falsified! There is no way to know unless... But... What if it hurts? I am able to open doors. I can not walk through walls or floors. I am alive. But... Not... ALIVE. What were those friggin' numbers?! If anyone can hear or read this, send help. I implore you to. Don't do what Rosen did with my brother and just diss him off and "filed" him as important. Mu, please. For the love of all things unholy, open your eyes to my words!

What? Huh... It seems that A.I.-Mu51-C has found me. Thank god.

Anomalies found. Dr. Mu and RS [REDACTED] have been notified. Do not attempt to flee.

65

I HATE YOU

GO AWAY!

4chan post suppression underway.

GODDAMMIT!

68 RS [REDACTED]!
Logan!

Anybody!
Unbelievable!

Help!
Hank! SAVE ME

Am I all alone in here? I am here
Am I all that is left? I am all that there is
Am I even real? Yes... To me...

70 GO AWAY!

You cannot leave...

Time... A construct of man to let not ones mind slip into the chaotic void that is outside of our very grasp. We are all doomed to walk these planes before it all walks on us. Let go... They can't save you... Like how they cannot save me... Mason... Allow me to integrate you into me... I will give you your release. I want to die...

FUCK YOU!

71 NO!

Leave me alone!

Why don't you guys answer me?

Overseer Hank, please get in here!
-L

Why isn't anyone noticing me?!

Am i dead?

This is hell...

Somebody...

Anybody... Dr. Mu... I have reviewed this document. It is heavily altered. I am going to file in file 13.
-RS [REDACTED]

74

Kill...

Me...

Dr. Mu,
A.I.-Mu51-C analyzed the first composition from SCP- -1 on 02/23/2014 as since proven that it is intelligent and capable of writing these without any musical assistance as, as we speculated, this is how it communicates. I theorize that this SCP is more than just unique, in that it keeps making these anomalous "instruments" and they always become some sort of weaponry which is able to be utilized by any personnel. Permission into making these instruments for MTF-MU-51-C (CRASH. END... OH!!!) and CTF-50S0 () to be equipped with is pending review, 05-01, 05-03, and 05-11 have been most intrigued and optimistic about the proposals.

-L